

ZONING AND OVERLAY DISTRICT MAP
Town of Henderson

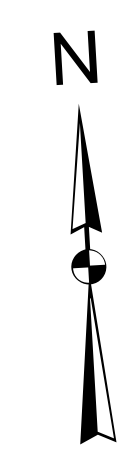
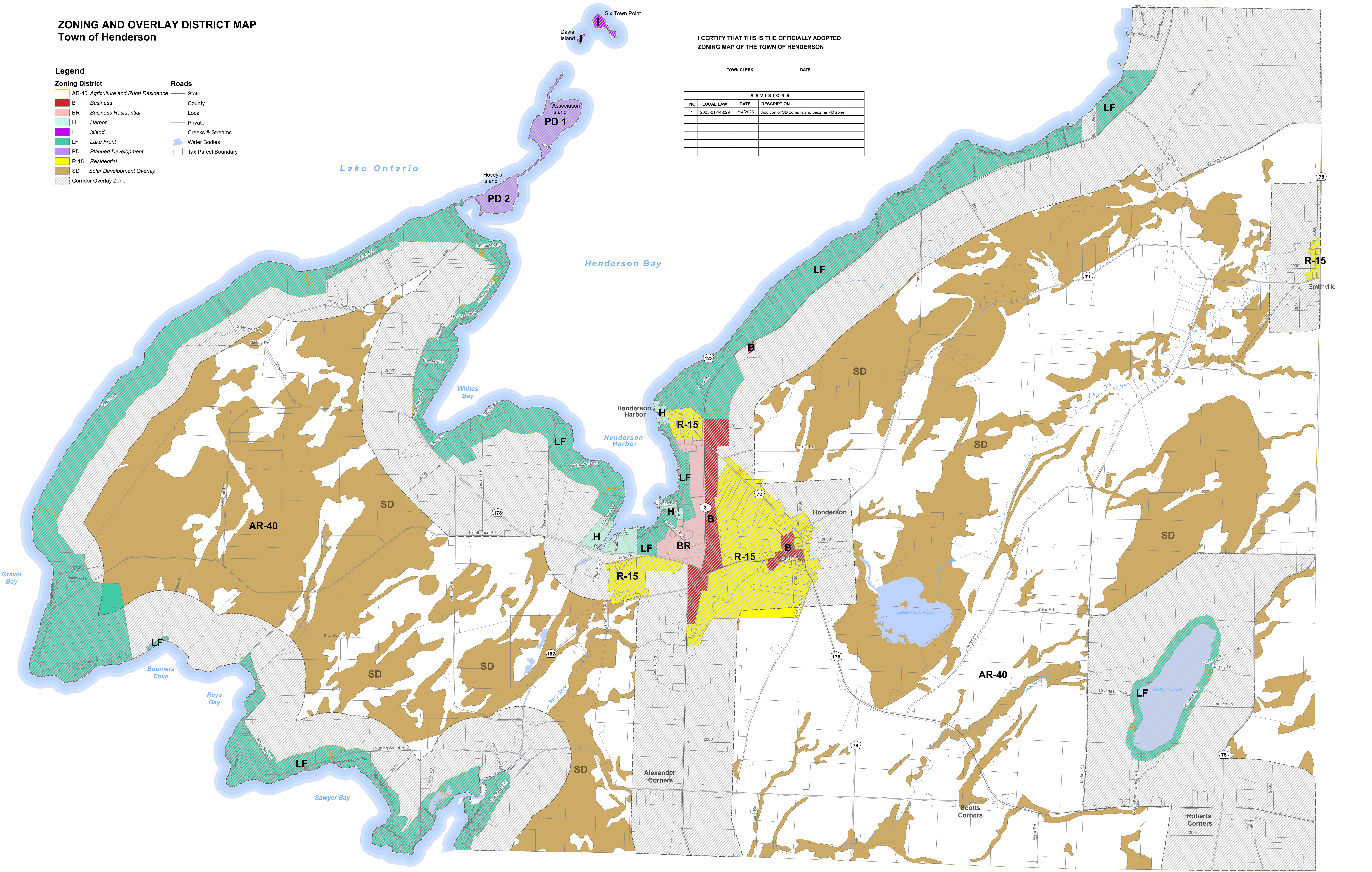
Legend

- | | |
|---------------------------------------|---------------------|
| Zoning District | Roads |
| AR-40 Agriculture and Rural Residence | State |
| B Business | County |
| BR Business Residential | Local |
| H Harbor | Private |
| I Island | Creeks & Streams |
| LF Lake Front | Water Bodies |
| PD Planned Development | Tax Parcel Boundary |
| R-15 Residential | |
| SD Solar Development Overlay | |
| Corridor Overlay Zone | |

I CERTIFY THAT THIS IS THE OFFICIALLY ADOPTED
 ZONING MAP OF THE TOWN OF HENDERSON

TOWN CLERK _____ DATE _____

REVISIONS			
NO.	LOCAL LAW	DATE	DESCRIPTION
1	2025-01-14-029	1/14/2025	Addition of SD zone, island became PD zone



0 1,200 Feet 2,400 3,600 4,800
 1 inch = 1,200 feet



Created by the Jefferson County
 Department of Planning
 March 2006
 Revised January 2025

Sources:
 Henderson Planning Board
 Jefferson County Real Property Office
 Jefferson County Planning Department
 NYS Office of Cyber Security and Critical Infrastructure Coordination